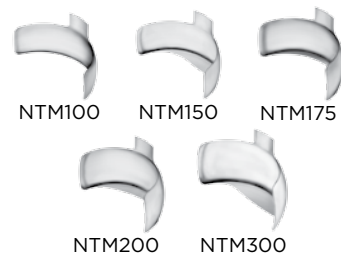


and we're here to help.

And when you want to get answers to your clinical questions, call us. You'll talk directly with people who know how these products actually work. We're committed to providing you with better solutions and better value so that you can **Reinvent Your Practice.**



Full Contour Bands \$58/pack

NTM100	Premolar, 4.0 mm, w/ext 4.4 mm	50
NTM150	Premolar with extension, 4.1 mm, w/ext 6.0 mm	50
NTM175	Molar, 5.0 mm, w/ext 5.6 mm	50
NTM200	Tall Molar, 5.4 mm, w/ext 6.6 mm	50
NTM300	Tall Molar with extension, 6.0 mm, w/ext 8.7 mm	50



Instruments

NT-MRDF-100	Ring Placement Forceps	1	\$75
NT-DF6-8	Band Forceps	1	\$23

re·invent
DENTAL PRODUCTS Toll Free 844.200.0721 | Phone 616.200.0721 | Email: info@reinventdental.com

NiTin™ Starter Kit NT-KMN-01

- 1 Long NiTin™ Ring
- 1 Standard NiTin™ Ring
- 100 Assorted Matrices
- 100 Assorted Wedges
- 1 Ring Placement Forceps
- 1 Band Forceps

\$440 Direct!



Rings \$189/pack

NT400	NiTin™ Long Rings	2
NT500	NiTin™ Standard Rings	2



Wedges \$39/pack

NTYL	X-small, yellow	100
NTBL	Small, blue	100
NTOR	Medium, orange	100
NTGR	Large, green	100

NiTin™

NiTinol Sectional Matrix System

The matrix system
re·invented

re·invent
DENTAL PRODUCTS

We're **Reinvent Dental Products**

We're here to help you simplify your procedures and add to your bottom line. By analyzing products, figuring out what's good about them and what isn't, we can improve them...significantly. Better materials mean better performance in your operatory.

re·invent
DENTAL PRODUCTS

This is how you Reinvent a sectional matrix system.

Each component of the NiTin™ Sectional Matrix System has been Reinvented to enhance performance and value. From the drawn-wire Nitinol separator rings and ideally shaped matrices to the extra-gentle yet firm wedges. NiTin™ will deliver consistent, predictable contacts like no other system can!

Longevity by design

- Nitinol drawn-wire nickel titanium is superior to stainless steel or laser-cut, solid NiTi
- Proprietary heat-set processing increases strength and resiliency
- PEEK® (polyether ether ketone) super-polymer reinforcement reduces ring stretch
- **Predictable performance with every use**

Optimized tip geometry for adaptation and control

- Anatomically-shaped tips reduce flash
- Super strong PEEK® grips the infrabulge and won't pop off
- Won't collapse bands on wider preps
- **Reduced finishing time without frustration**



Full contour matrix bands for ideal anatomy

- Longer, three-dimensionally contoured bands are perfectly sized to fit a wider variety of teeth
- Easy placement tab - no holes to get caught anywhere
- Rigid full contour design resists deformation during placement
- Polished dead-soft 0.0015" stainless steel

Precision control for easier ring placement

- Tips machined to perfectly match NiTin™ rings
- No ring slippage or wobble



Simplified matrix band and wedge placement

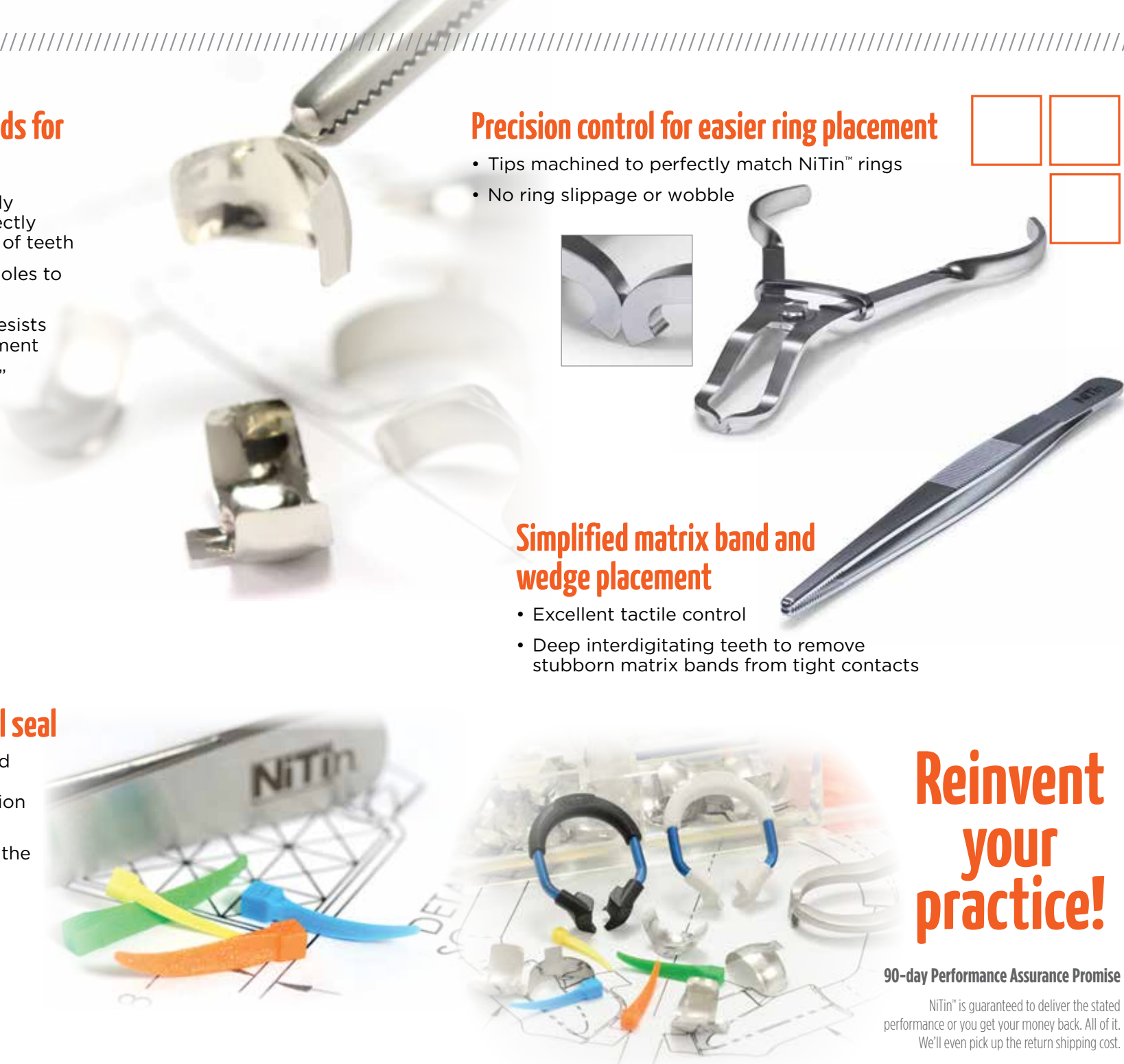
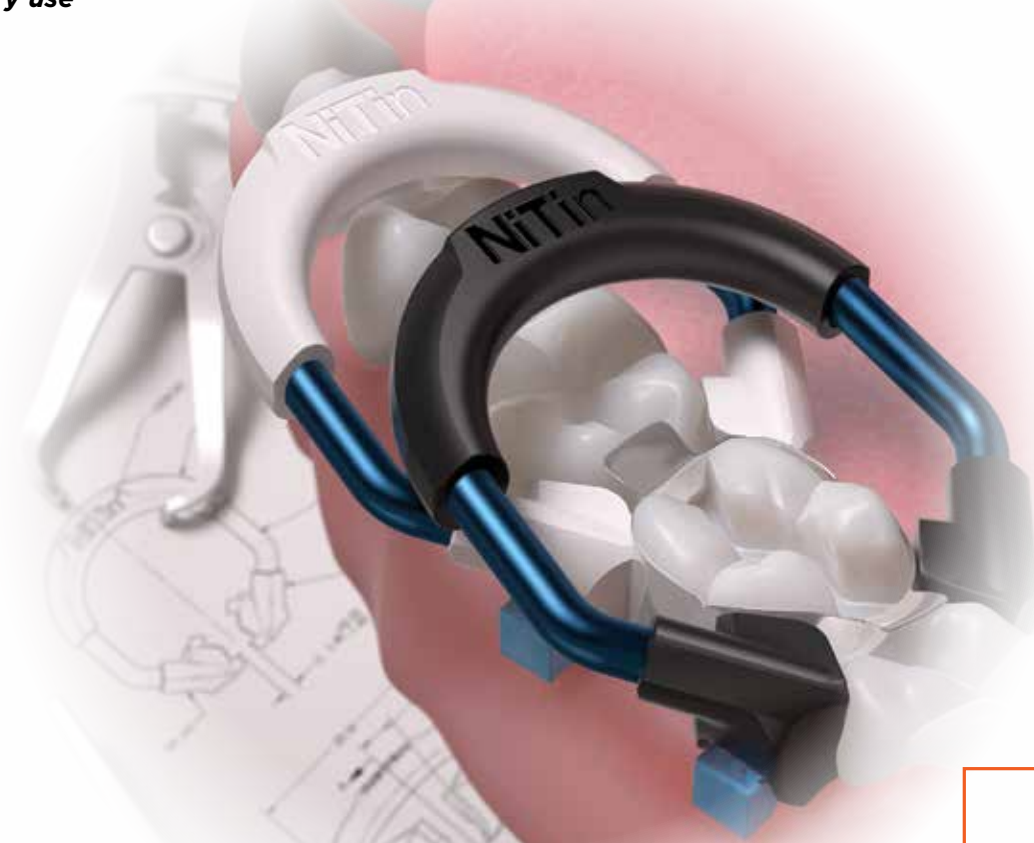
- Excellent tactile control
- Deep interdigitating teeth to remove stubborn matrix bands from tight contacts

Gentle yet firm gingival seal

- Gingiva-friendly curves and a ski-like tip allow NiTin™ wedges to glide into position
- Flexible and firm, they provide the critical seal at the gingival margin

The difference is Black and White

- Longer lasting for consistently tight contacts even after 100's of uses
- Time saving and user friendly
- **NiTin™ rings are a better value!**



Reinvent your practice!

90-day Performance Assurance Promise

NiTin™ is guaranteed to deliver the stated performance or you get your money back. All of it. We'll even pick up the return shipping cost.

Reinventdental.com (or call 844-200-0721)